

# D19 HIGH QUALITY EDGE CARD CONNECTOR STRAIGHT (3.18mm\*6.36mm)

PITCH:3.18mm

## SPECIFICATIONS

### Material

Insulator : PBT, glass reinforced, rated UL 94V-0

Contact : Phosphor Bronze

### Electrical

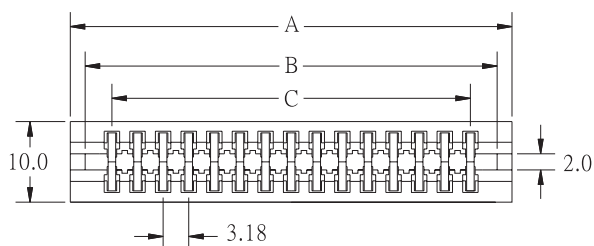
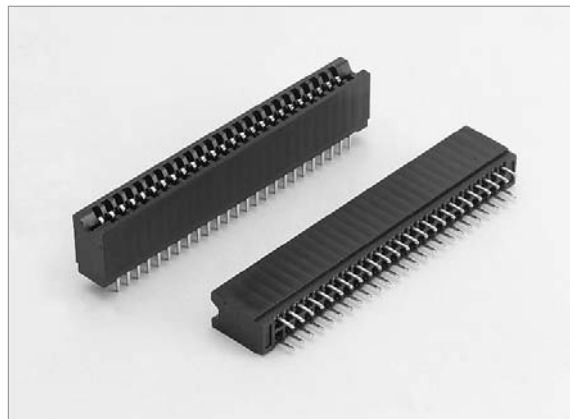
Current Rating : 3 Amp DC

Contact Resistance : 30 mΩ max.

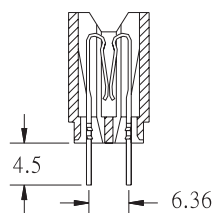
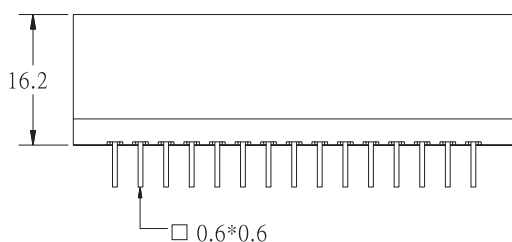
Insulation Resistance : 3000 MΩ min.

Dielectric Withstanding Voltage : 500V AC for 1minute

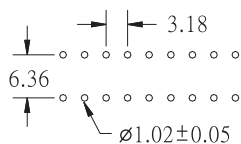
Operating Temperature : -40°C to +105°C



POSITION	A	B	C
10	23.06	19.36	12.72
20	38.96	35.26	28.62
30	54.86	51.16	44.52
38	67.58	63.88	57.24
44	77.12	73.42	66.78
50	86.66	82.96	76.32
56	96.20	92.50	85.86
60	102.56	98.86	92.22
62	105.74	102.04	95.40
70	118.46	114.76	108.12
72	121.64	117.94	111.30
86	143.90	140.20	133.56
100	166.16	162.46	155.82
150	245.66	241.96	235.32



(CLOSE TYPE)



RECOMMENDED P.C.B. LAYOUT

## HOW TO ORDER:

D19 -  1 -  2 -  3 -  4

1.NO. OF CONTACT	2.CONTACT MATERIAL	3.CONTACT PLATING	4.INSULATOR COLOR
10 20 30 38 44 50 56 60 62 70 72 86 100 150	B: PHOSPHOR BRONZE	T: TIN PLATED S: SELECTIVE G: GOLD FLASH A: 5u" INCH GOLD B: 10u" INCH GOLD C: 15u" INCH GOLD D: 30u" INCH GOLD	1. BLACK

D