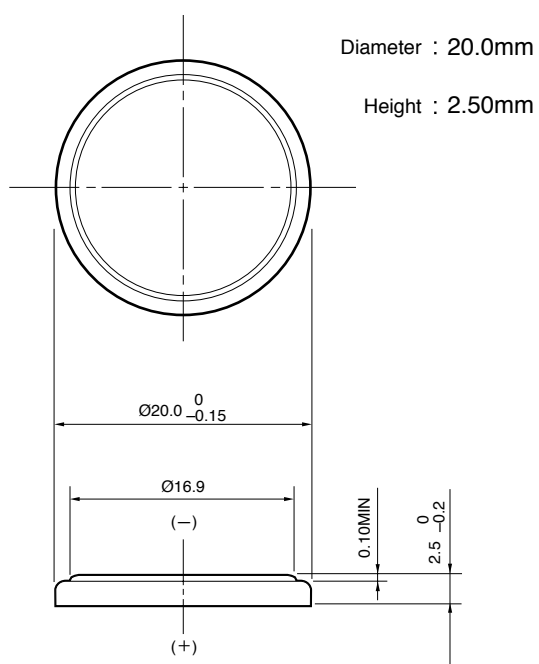


Lithium Manganese Dioxide Battery

CR2025

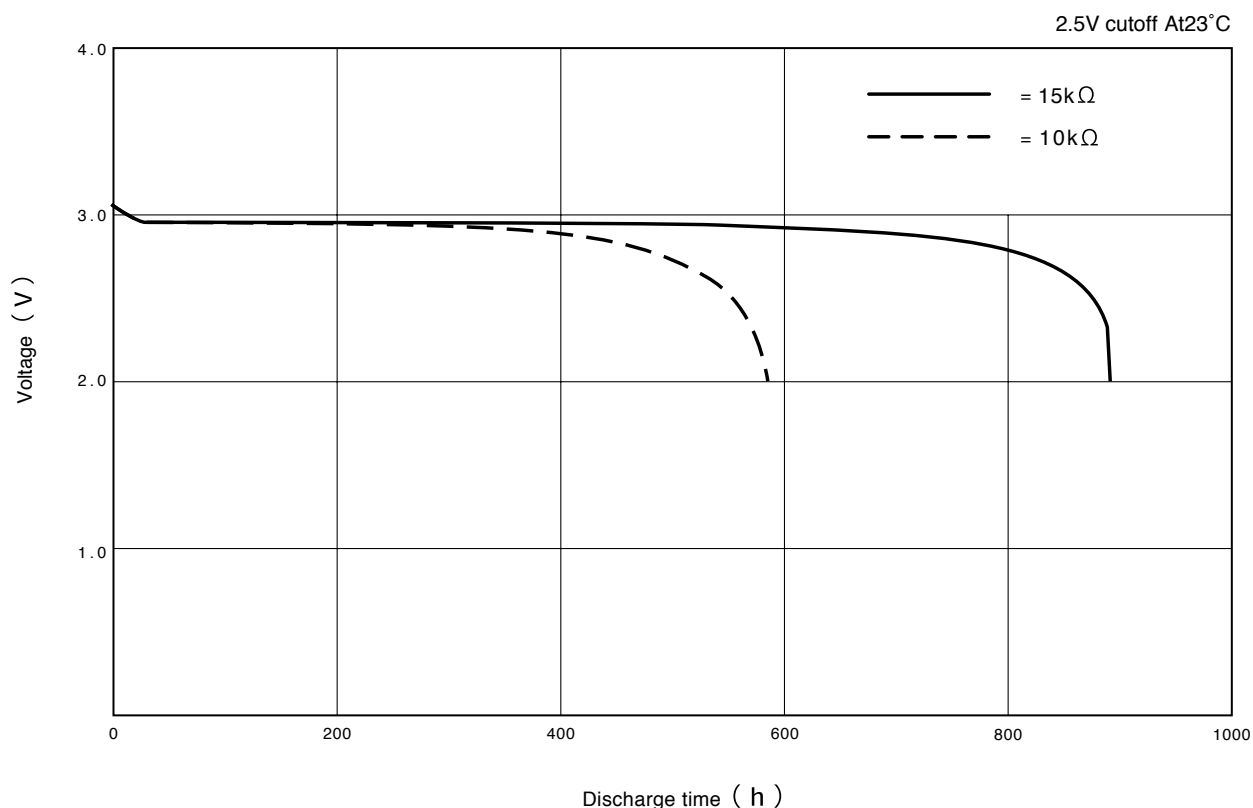
■ Dimensions (mm)



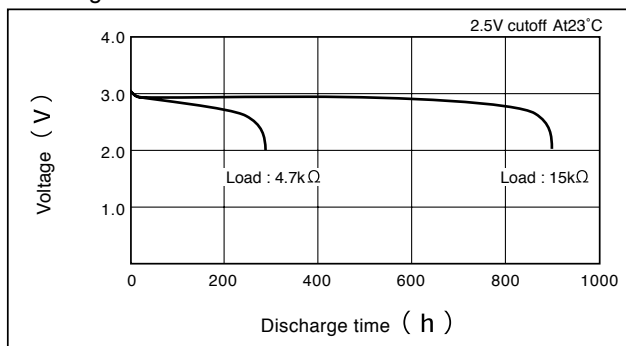
■ Specifications

Nominal Voltage	3V
Nominal Capacity (2.5V cutoff)	160mAh
Recommended Continuous Drain	0.2mA
Recommended Pulse Drain	14mA
Weight	2.4g
Applications	
<ul style="list-style-type: none"> ● Electronic Watch or Clock ● Remote Controller ● Electronic Game, Toy ● Memory Back-up Power Source for SRAM or Real Time Clock (RTC) 	

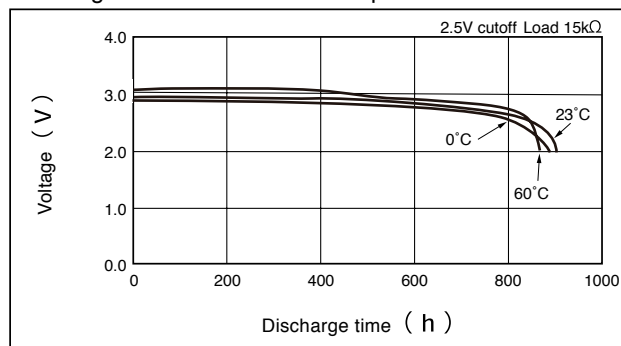
■ Discharge Characteristics



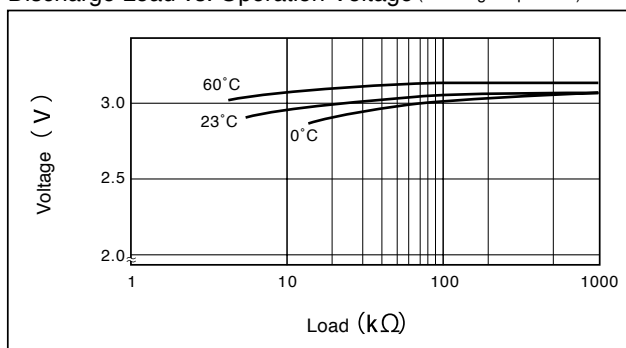
Discharge Characteristics on Load



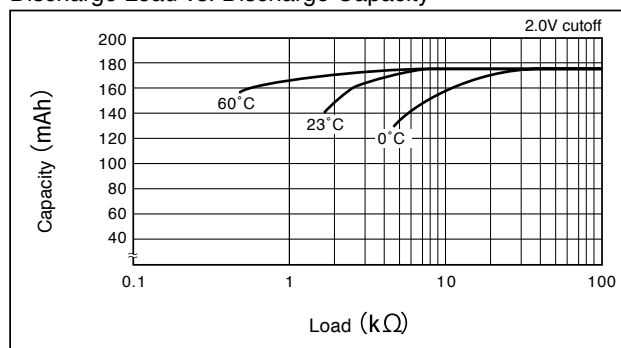
Discharge Characteristics on Temperature



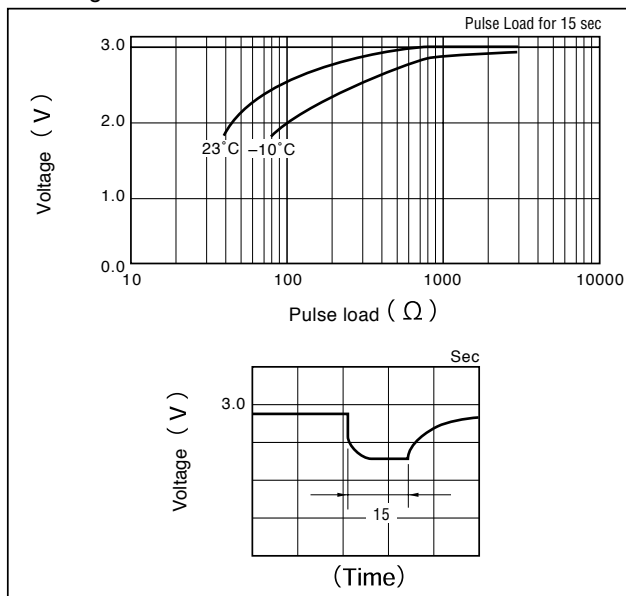
Discharge Load vs. Operation Voltage (Discharge depth 40%)



Discharge Load vs. Discharge Capacity



Discharge Characteristics on Pulse Load (Discharge depth 40%)



Storage Characteristics

