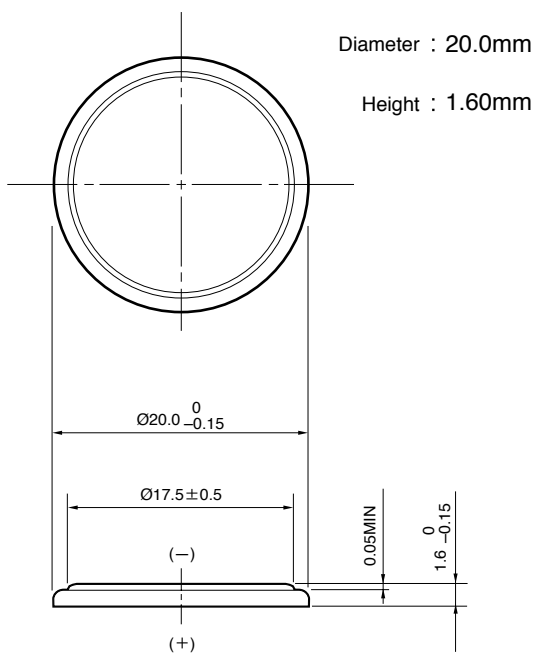


Lithium Manganese Dioxide Battery

CR2016

■ Dimensions (mm)



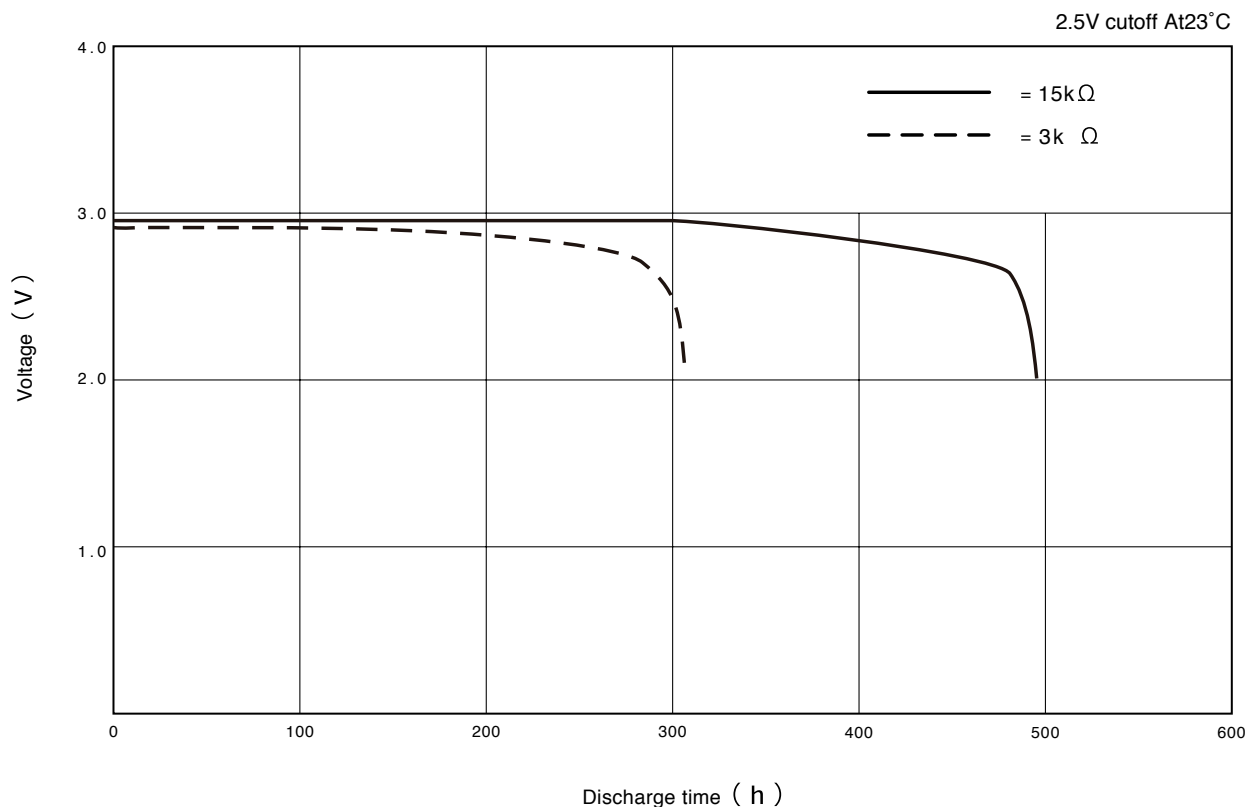
■ Specifications

Nominal Voltage	3V
Nominal Capacity (2.5V cutoff)	90mAh
Recommended Continuous Drain	0.1mA
Recommended Pulse Drain	17mA
Weight	1.7g

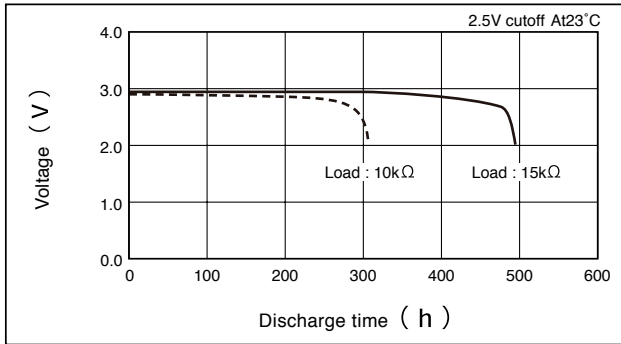
Applications

- Electronic Watch or Clock ● Electronic Calculator
- IC Card ● Memory Card ● Remote Controller
- Electronic Game, Toy
- Memory Back-up Power Source for SRAM or Real Time Clock (RTC)

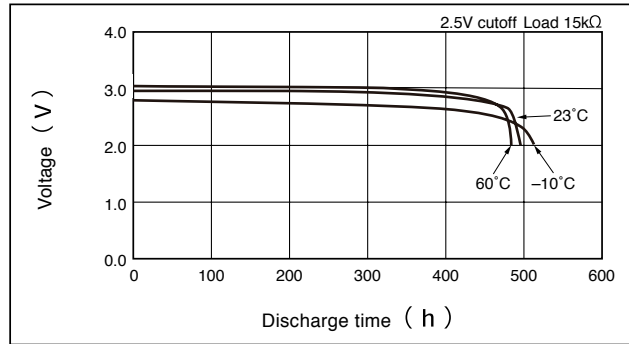
■ Discharge Characteristics



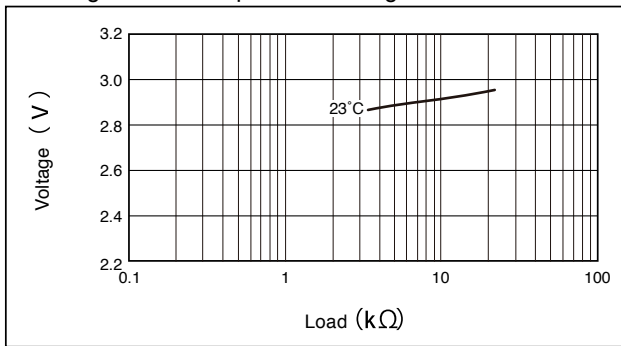
Discharge Characteristics on Load



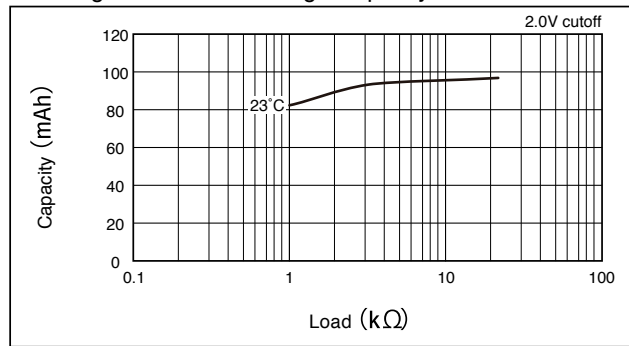
Discharge Characteristics on Temperature



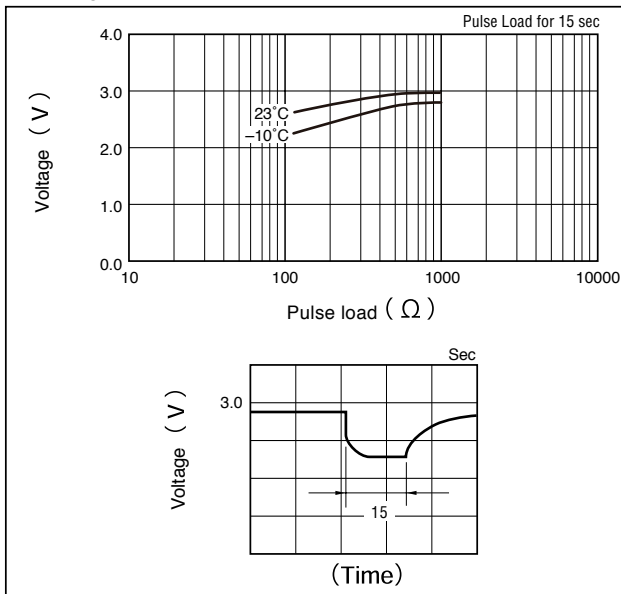
Discharge Load vs. Operation Voltage (Discharge depth 40%)



Discharge Load vs. Discharge Capacity



Discharge Characteristics on Pulse Load (Discharge depth 40%)



Storage Characteristics

