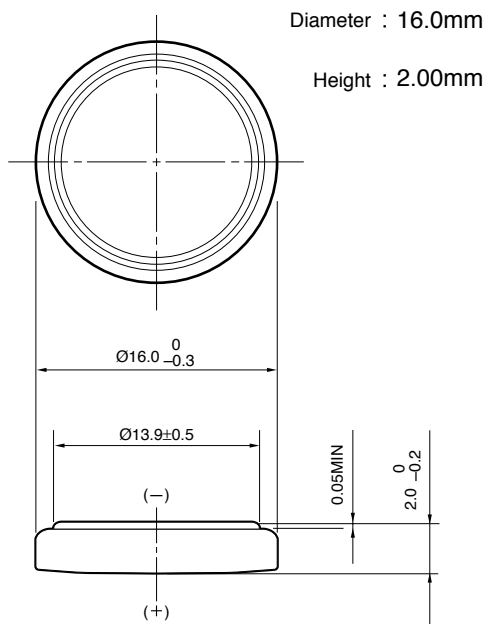


Lithium Manganese Dioxide Battery

CR1620

■ **Dimensions (mm)**



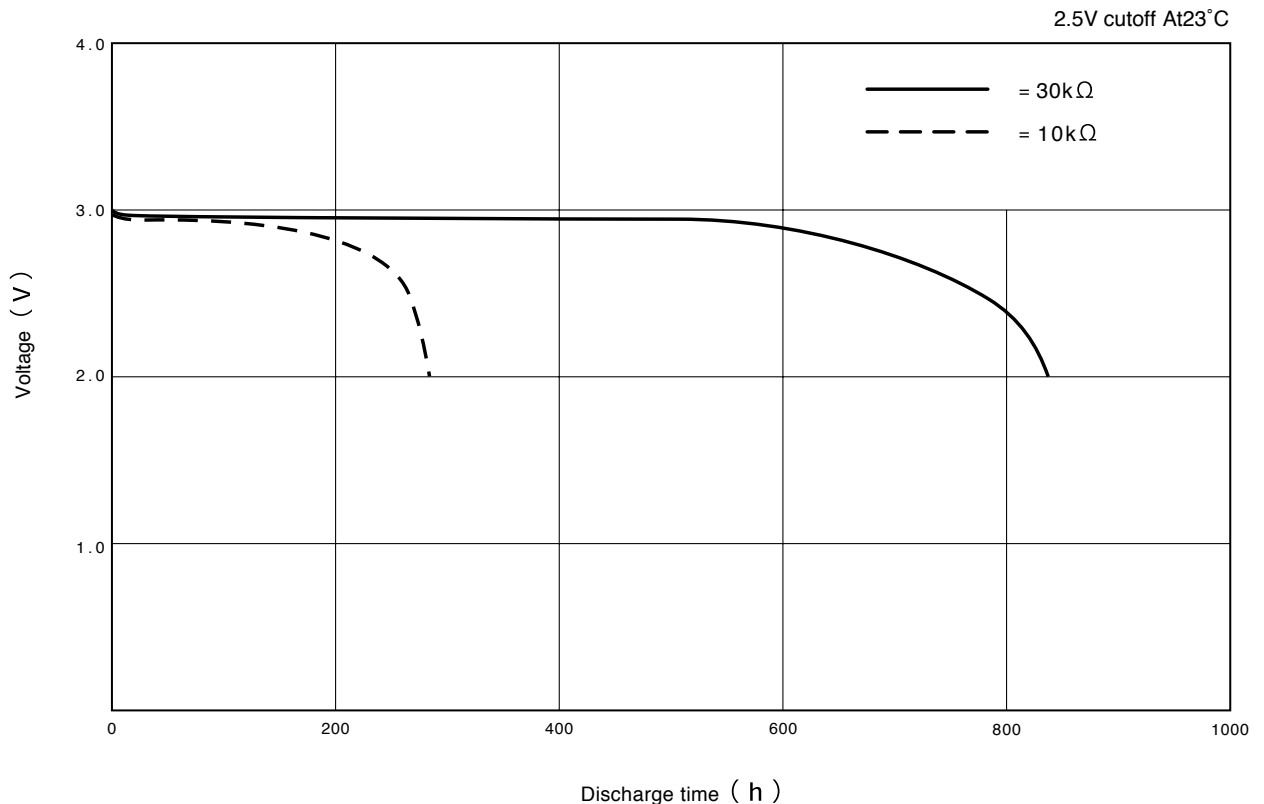
■ **Specifications**

Nominal Voltage	3V
Nominal Capacity (2.5V cutoff)	75mAh
Recommended Continuous Drain	0.1mA
Recommended Pulse Drain	5mA
Weight	1.2g

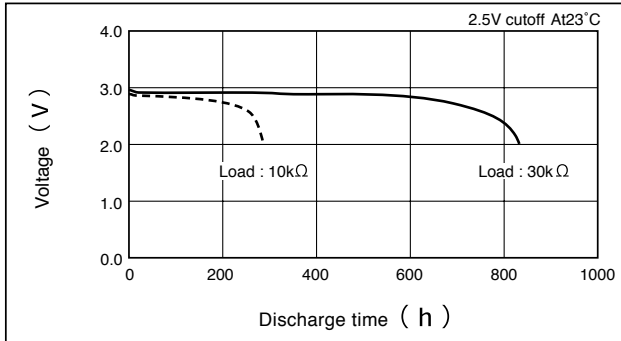
Applications

- Electronic Watch or Clock
- Electronic Calculator
- Memory Back-up Power Source for SRAM or Real Time Clock (RTC)

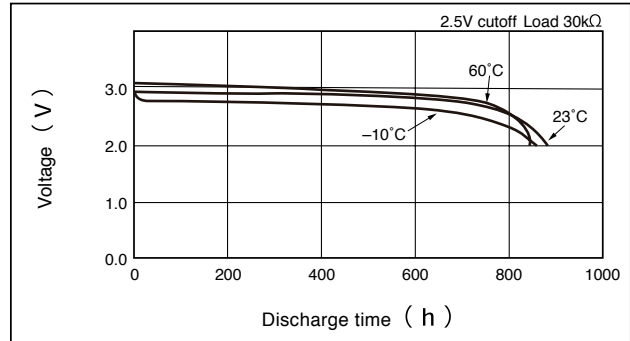
■ **Discharge Characteristics**



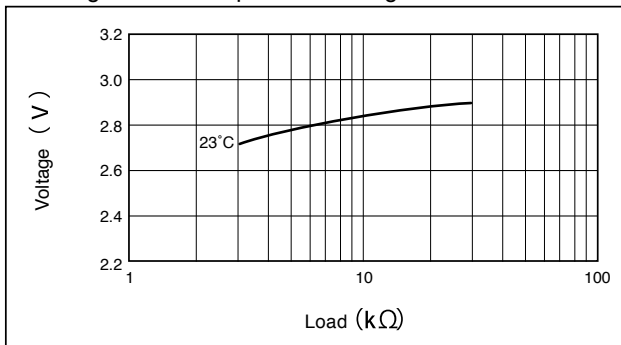
Discharge Characteristics on Load



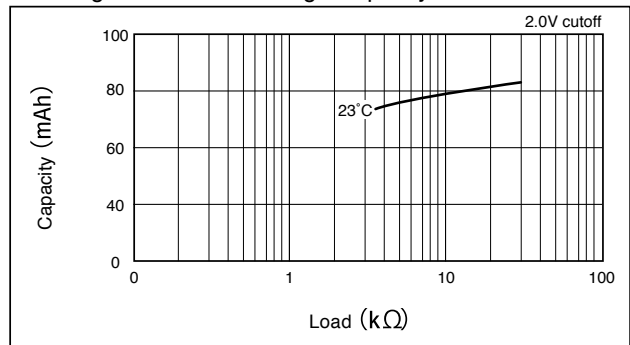
Discharge Characteristics on Temperature



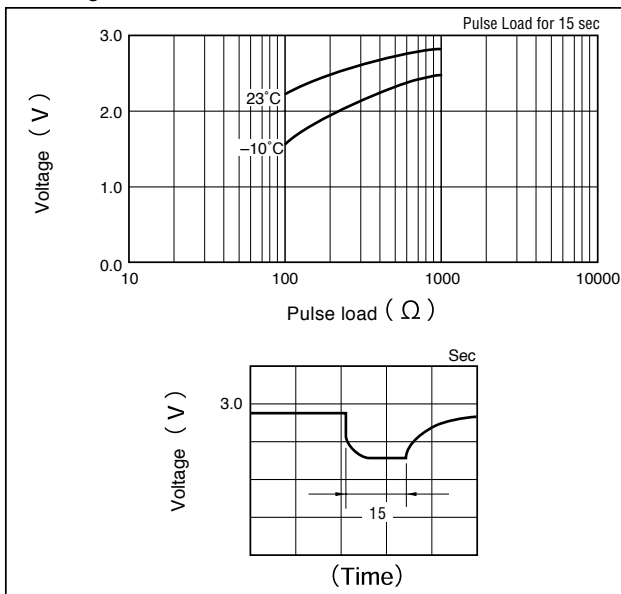
Discharge Load vs. Operation Voltage (Discharge depth 40%)



Discharge Load vs. Discharge Capacity



Discharge Characteristics on Pulse Load (Discharge depth 40%)



Storage Characteristics

