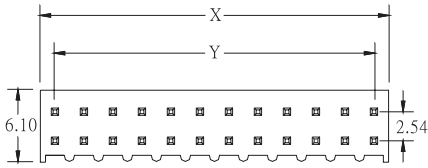


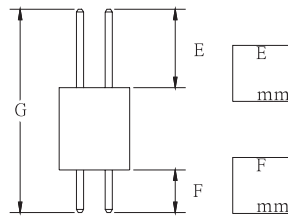
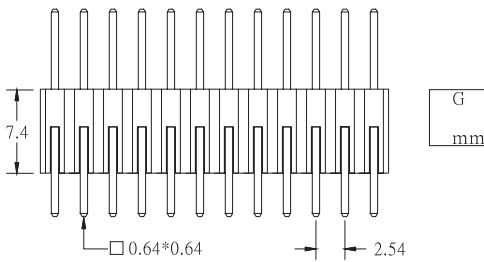
# C31

## PIN HEADER 7.4mm BASE STRAIGHT

PITCH: 2.54mm



X	2.54*POSITION NO.
Y	2.54*(POSITION. NO.-1)



1. NO. OF CONTACT	2. CONTACT MATERIAL
04 TO 80	A: BRASS B: PHOSPHOR BRONZE
3. CONTACT PLATING	4. INSULATOR COLOR
T: TIN PLATED S: SELECTIVE G: GOLD FLASH A: 5u" INCH GOLD B: 10u" INCH GOLD C: 15u" INCH GOLD D: 30u" INCH GOLD	1. BLACK
5. PIN LENGTH	
E / F / G	

C

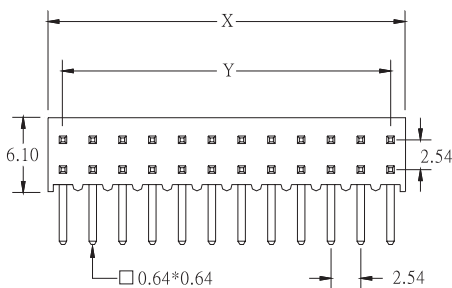
### HOW TO ORDER:

C31 -  -  -  -  -  / E / F / G

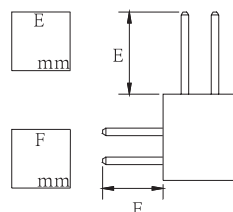
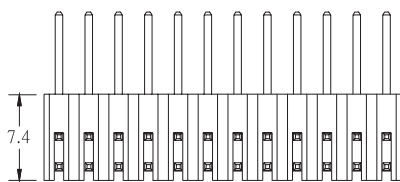
# C32

## PIN HEADER 7.4mm BASE RIGHT ANGLE

PITCH: 2.54mm



X	2.54*POSITION NO.
Y	2.54*(POSITION. NO.-1)



1. NO. OF CONTACT	2. CONTACT MATERIAL
04 TO 80	A: BRASS B: PHOSPHOR BRONZE
3. CONTACT PLATING	4. INSULATOR COLOR
T: TIN PLATED S: SELECTIVE G: GOLD FLASH A: 5u" INCH GOLD B: 10u" INCH GOLD C: 15u" INCH GOLD D: 30u" INCH GOLD	1. BLACK
5. PIN LENGTH	
E / F	

### HOW TO ORDER:

C32 -  -  -  -  -  / E / F