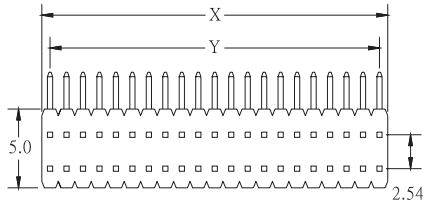


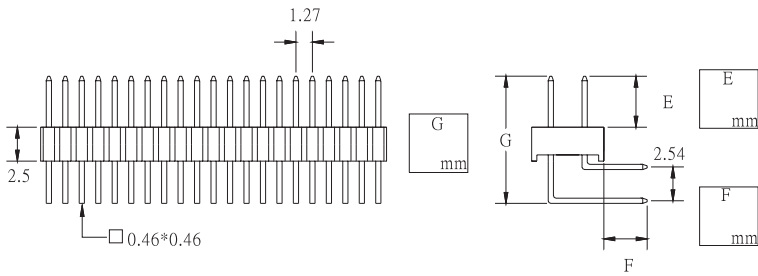
C14

PIN HEADER DUAL ROW RIGHT ANGLE 1.27mm * 2.54mm (H : 2.5mm)

PITCH: 1.27mm



| | |
|---|-----------------------|
| X | 1.27*POSITION NO. |
| Y | 1.27*(POSITION NO.-1) |



| | |
|---|--------------------------------|
| 1. NO. OF CONTACT | 2. CONTACT MATERIAL |
| 04 TO 100 | A: BRASS B: PHOSPHOR BRONZE |
| 3. CONTACT PLATING | 4. INSULATOR COLOR |
| T: TIN PLATED S: SELECTIVE G: GOLD FLASH A: 5u" INCH GOLD B: 10u" INCH GOLD C: 15u" INCH GOLD D: 30u" INCH GOLD | 1. BLACK |
| 5. PIN LENGTH | |
| E / F / G | |

HOW TO ORDER:

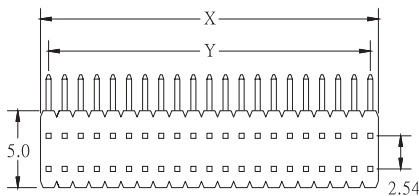
C14 - - - - - / E / F / G

C

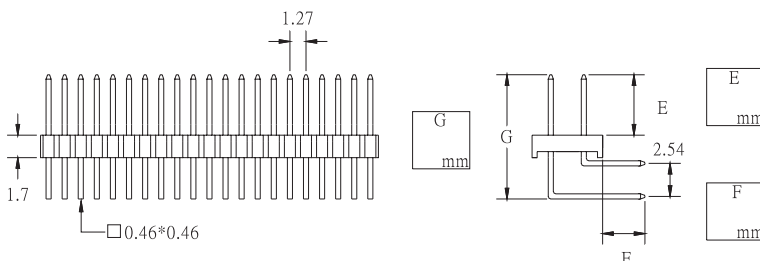
C14a

PIN HEADER DUAL ROW RIGHT ANGLE 1.27mm * 2.54mm (H : 1.7mm)

PITCH: 1.27mm



| | |
|---|-----------------------|
| X | 1.27*POSITION NO. |
| Y | 1.27*(POSITION NO.-1) |



| | |
|---|--------------------------------|
| 1. NO. OF CONTACT | 2. CONTACT MATERIAL |
| 04 TO 100 | A: BRASS B: PHOSPHOR BRONZE |
| 3. CONTACT PLATING | 4. INSULATOR COLOR |
| T: TIN PLATED S: SELECTIVE G: GOLD FLASH A: 5u" INCH GOLD B: 10u" INCH GOLD C: 15u" INCH GOLD D: 30u" INCH GOLD | 1. BLACK |
| 5. PIN LENGTH | |
| E / F / G | |

HOW TO ORDER:

C14a - - - - - / E / F / G