

C03f

ELEVATED SHRUNK BOX HEADER STRAIGHT

PITCH: 2.54mm

SPECIFICATIONS

Material

Insulator : PBT, glass reinforced, rated UL 94V-0

Contact : Phosphor Bronze or Brass

Electrical

Current Rating : 2 Amp

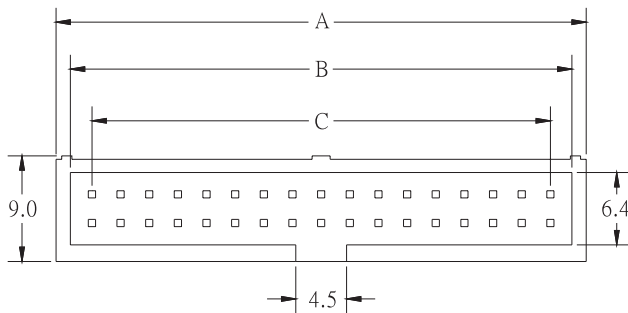
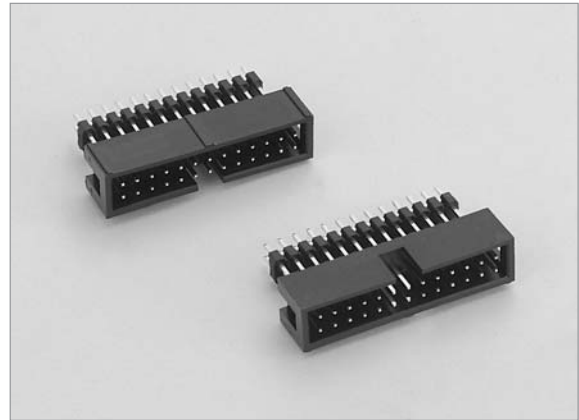
Contact Resistance : 30 mΩ max.

Insulation Resistance : 3000 MΩ min.

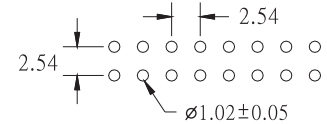
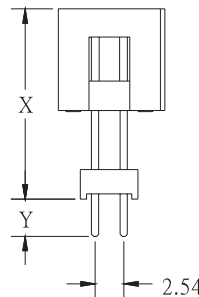
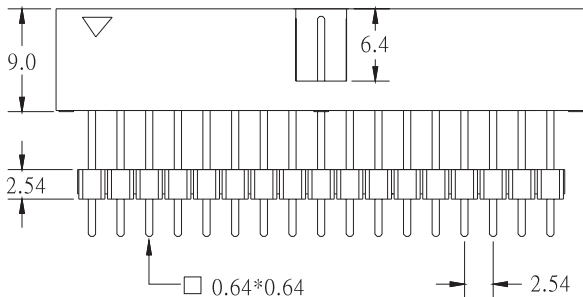
Dielectric Withstanding Voltage : 500V AC for 1minute

Operating Temperature : -40°C to +105°C

♦ Mating Suggestion : B06d, B06e, B06f, B07a, B22b & B26a series.



POSITION	A	B	C
6	11.43	8.89	5.08
8	13.97	11.43	7.62
10	16.51	13.97	10.16
12	19.05	16.51	12.70
14	21.59	19.05	15.24
16	24.13	21.59	17.78
20	29.21	26.67	22.86
24	34.29	31.75	27.94
26	36.83	34.29	30.48
30	41.91	39.37	35.56
34	46.99	44.45	40.64
40	54.61	52.07	48.26
44	59.69	57.15	53.34
50	67.31	64.77	60.96
60	80.01	77.47	73.66
64	85.09	82.55	78.74



RECOMMENDED P.C.B. LAYOUT

HOW TO ORDER:

C03f - - - - - / X/Y

1.NO. OF CONTACT	2.CONTACT MATERIAL	3.CONTACT PLATING	5.INSULATOR COLOR	5.LEAD STYLE
06 08 10 12 14 16 20 24 26 30 34 40 44 50 60 64	A: BRASS B: PHOSPHOR BRONZE	T: TIN PLATED S: SELECTIVE G: GOLD FLASH A: 5u" INCH GOLD B: 10u" INCH GOLD C: 15u" INCH GOLD D: 30u" INCH GOLD	1. BLACK	X/Y

C