

A39

IDC SOCKET SINGLE ROW (HORIZONTAL TYPE)

PITCH: 2.5mm

SPECIFICATIONS

Material

Insulator : PC, rated UL 94V-0

Contact : Phosphor Bronze

Electrical

Current Rating : 2 Amp

Contact Resistance : 30 mΩ max.

Insulation Resistance : 3000 MΩ min.

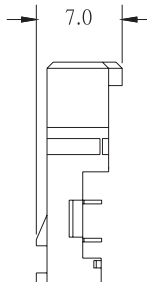
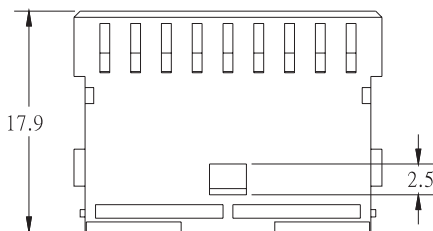
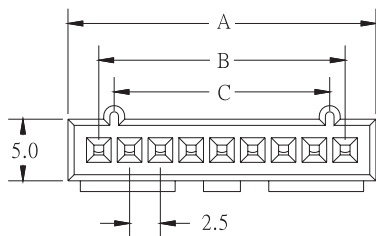
Dielectric Withstanding Voltage : 500V AC for 1minute

Operating Temperature : -40°C to +105°C

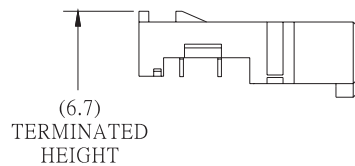
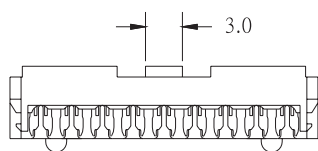
- ◆ Terminated with L04a 2.5mm pitch flat ribbon cable.
- ◆ Mating Suggestion: C62, C63, C64 & C65 series.



A



POSITION	A	B	C
2	7.5	2.5	--
3	10.0	5.0	2.5
4	12.5	7.5	5.0
5	15.0	10.0	7.5
6	17.5	12.5	10.0
7	20.0	15.0	12.5
8	22.5	17.5	15.0
9	25.0	20.0	17.5
10	27.5	22.5	20.0
11	30.0	25.0	22.5
12	32.5	27.5	25.0
13	35.0	30.0	27.5
14	37.5	32.5	30.0
15	40.0	35.0	32.5
16	42.5	37.5	35.0
17	45.0	40.0	37.5
18	47.5	42.5	40.0
19	50.0	45.0	42.5
20	52.5	47.5	45.0



HOW TO ORDER:

A39 - - - -

1.NO. OF CONTACT	2.CONTACT MATERIAL	3.CONTACT PLATING	4.INSULATOR COLOR
02 03 04 05 06 07 08 09 10 11 12 13 14 15 16 17 18 19 20	B : PHOSPHOR BRONZE	T: TIN PLATED S: SELECTIVE G: GOLD FLASH A: 5u" INCH GOLD B: 10u" INCH GOLD C: 15u" INCH GOLD D: 30u" INCH GOLD	1.BLACK