

A32b

HALF PITCH IDC SOCKET WITH LATCH (1.27mm * 1.27mm)

PITCH: 1.27mm

SPECIFICATIONS

Material

Insulator : LCP, glass reinforced, rated UL 94V-0

Contact : Phosphor Bronze

Electrical

Current Rating : 0.5 Amp

Contact Resistance : 30 mΩ max.

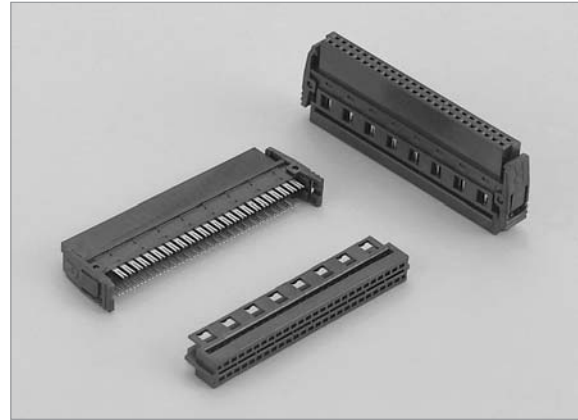
Insulation Resistance : 1000 MΩ min.

Dielectric Withstanding Voltage : 250V AC for 1minute

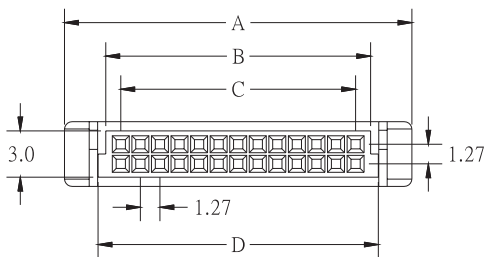
Operating Temperature : -40°C to +105°C

♦ Terminated with 0.635mm pitch flat ribbon cable.

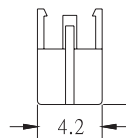
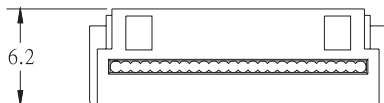
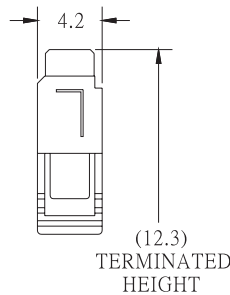
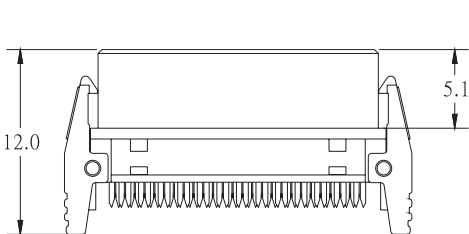
♦ Mating Suggestion : C56, C57 & C58 series.



A



POSITION	A	B	C	D
12	12.69	8.30	6.35	9.30
26	21.58	17.19	15.24	18.19
50	36.82	32.43	30.48	33.43
68	48.25	43.86	41.91	44.86
80	55.87	51.48	49.53	52.48



HOW TO ORDER:

A32b - 1 - 2 - 3 - 4

1.NO. OF CONTACT	2.CONTACT MATERIAL	3.CONTACT PLATING	4.INSULATOR COLOR
12 26 50 68 80	B : PHOSPHOR BRONZE	T: TIN PLATED S: SELECTIVE G: GOLD FLASH A: 5u" INCH GOLD B: 10u" INCH GOLD C: 15u" INCH GOLD D: 30u" INCH GOLD	1.BLACK