

A15b FINE PITCH DIP PLUG

PITCH: 1.27mm

SPECIFICATIONS

Material

Insulator : PBT, glass reinforced, rated UL 94V-0

Contact : Phosphor Bronze

Electrical

Current Rating : 1 Amp

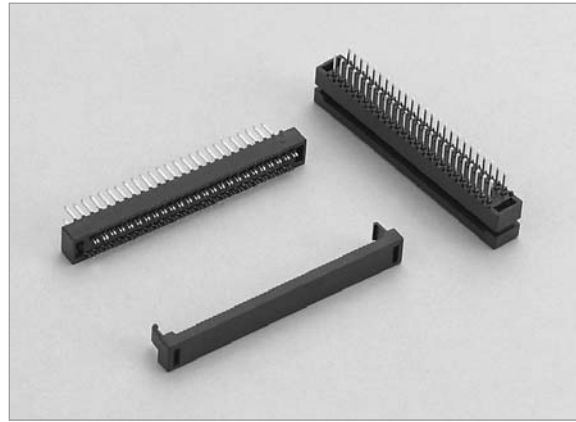
Contact Resistance : 30 mΩ max.

Insulation Resistance : 1000 MΩ min.

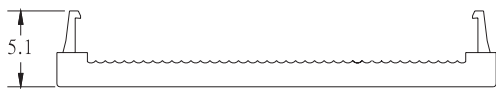
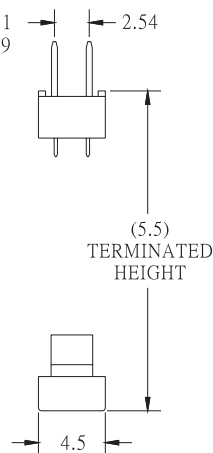
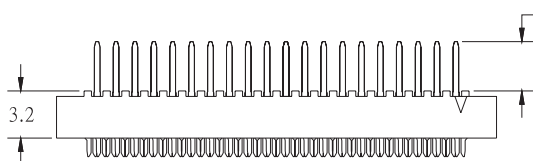
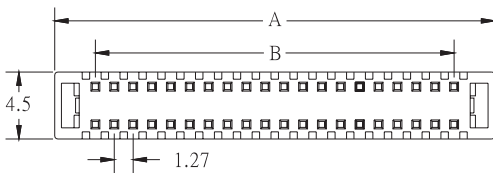
Dielectric Withstanding Voltage : 250V AC for 1minute

Operating Temperature : -40°C to +105°C

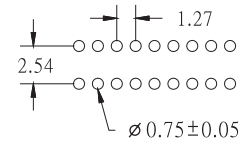
♦ Terminated with 0.635mm pitch flat ribbon cable.



A



POSITION	A	B
10	12.63	5.08
14	15.17	7.62
16	16.44	8.89
20	18.98	11.43
26	22.79	15.24
30	25.33	17.78
34	27.87	20.32
40	31.68	24.13
50	38.03	30.48
60	44.38	36.83
68	49.46	41.91
70	50.73	43.18
80	57.08	49.53
90	63.43	55.88
100	69.78	62.23



RECOMMENDED P.C.B. LAYOUT

HOW TO ORDER:

A15b - - - - -

1.NO. OF CONTACT	2.CONTACT MATERIAL	3.CONTACT PLATING	4.PIN LENGTH	5.INSULATOR COLOR
10 14 16 20 26 30 34 40 50 60 68 70 80 90 100	B: PHOSPHOR BRONZE	T: TIN PLATED S: SELECTIVE G: GOLD FLASH A: 5u" INCH GOLD B: 10u" INCH GOLD C: 15u" INCH GOLD D: 30u" INCH GOLD	A: 3.1mm B: 1.9mm	1. BLACK